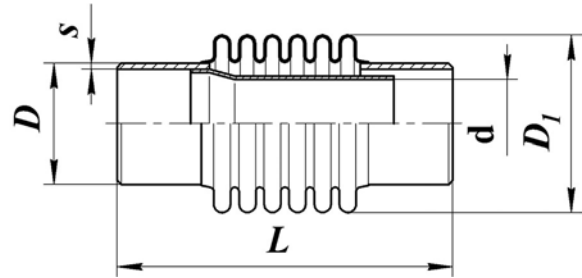


Bellows expansion joint, type OPG

An expansion joint consisting of a bellows and connection branch pipes further welded to a pipeline, with a mounted internal guide pipe. These expansion joints can also be installed directly into pipelines that conduct steam with a temperature of up to 300°C and a speed of over 40 m/s, as well as water with a temperature of up to 150°C at speeds over 8 m/s only with a closed water intake system and high-quality water treatment.



Reference designation	PN, MPa	DN, mm	Axial stroke 2λ-1, mm	Dimensions, mm				Weight, kg
				D	s	D ₁	L	
ОПГ-16-65-80-2.2	1,6 (16)	65	80	76	4,0	105	382	5
ОПГ-16-80-90-2.2		80	90	89	4,0	120	396	6
ОПГ-16-100-120-2.2		100	120	108	4,0	144	430	6
ОПГ-16-125-130-2.2		125	130	133	5,0	172	440	6
ОПГ-16-150-150-2.2		150	150	159	6,0	204	463	8
ОПГ-16-200-160-2.2		200	160	219	8,0	260	524	16
ОПГ-16-250-180-2.2		250	180	273	7,0	319	645	33
ОПГ-16-300-190-2.2		300	190	325	8,0	374	658	41
ОПГ-16-350-190-1.2		350	190	377	9,0	431	664	49
ОПГ-16-400-200-1.2		400	200	426	9,0	485	696	71
ОПГ-16-500-210-1.3		500	210	530	8,0	600	682	102
ОПГ-16-600-220-1.3		600	220	630	8,0	706	695	140
ОПГ-16-700-220-1.3		700	220	720	8,0	797	698	174
ОПГ-16-800-240-1.3		800	240	820	9,0	911	726	198
ОПГ-16-900-260-1.3		900	260	920	10,0	1015	704	237
ОПГ-16-1000-260-1.3		1000	260	1020	12,0	1117	726	279
ОПГ-16-1200-260-1.3	1200	260	1220	12,0	1319	726	386	
ОПГ-16-1400-260-1.3	1400	260	1420	12,0	1522	732	424	
ОПГ-25-65-80-2.2	2,5 (25)	65	80	76	4,0	105	382	5
ОПГ-25-80-90-2.2		80	90	89	4,0	120	396	6
ОПГ-25-100-120-2.2		100	120	108	4,0	144	430	6
ОПГ-25-125-130-2.2		125	130	133	5,0	172	440	10
ОПГ-25-150-150-2.2		150	150	159	6,0	204	463	12
ОПГ-25-200-160-2.2		200	160	219	8,0	260	524	20
ОПГ-25-250-180-2.2		250	180	273	7,0	319	645	35
ОПГ-25-300-190-2.2		300	190	325	8,0	374	658	50
ОПГ-25-350-190-1.2		350	190	377	9,0	431	658	73
ОПГ-25-400-200-1.2		400	200	426	9,0	485	706	94
ОПГ-25-500-210-1.3		500	210	530	8,0	600	692	114
ОПГ-25-600-220-1.3		600	220	630	8,0	706	713	156
ОПГ-25-700-220-1.3		700	220	720	8,0	797	714	187
ОПГ-25-800-240-1.3		800	240	820	9,0	911	743	240
ОПГ-25-900-260-1.3		900	260	920	10,0	1015	719	277
ОПГ-25-1000-260-1.3		1000	260	1020	12,0	1119	742	329
ОПГ-25-1200-260-1.3	1200	260	1220	12,0	1321	770	446	
ОПГ-25-1400-260-1.3	1400	260	1420	12,0	1522	750	548	